



**Mysoft Heaven (BD) Ltd**  
A complete IT solution

# COMPANY PROFILE



[www.mysoftheaven.com](http://www.mysoftheaven.com)

# ABOUT US

We Provide Best service to our clients

## COMMITTED TO GIVE YOU EXCELLENT SERVICE.

**Mysoft Heaven (BD) Ltd.** offers the complete software product development, lifecycle and support services. We carry 15+ years experience in design, develop and maintaining software products and services. We understand in today's dynamic market, product development requires innovation, creativity as well as speed to deliver. We convert clients' 'Product Vision' into product development

The development life cycle is controlled by client inputs and direction. There are no hidden charges or any other additional costs involved. This provides you complete independence and flexibility to get the project developed end-to-end as per your budget provisions. we provide provides knowledgeable, skilled, motivated, energetic and competent consultants who work seamlessly as part of client teams to provide quality solutions. Before any such project begins, we provide you the effort estimates, project timeline, material/resource estimates and other vital figures to help you decide on financials.

We serve our clients with experienced and highly motivated staff. Our state of the art infrastructure helps us to overcome challenges associated with product development. Our long lasting engagement with Microsoft, Java, open source and other technology helps us to be on top in the changing technology market place, and enables us to support developed product accessible on cross platform (Window, Linux and Mac)



# MYSOFT HEAVEN (BD) SHORT PROFILE



# MISSION VISION



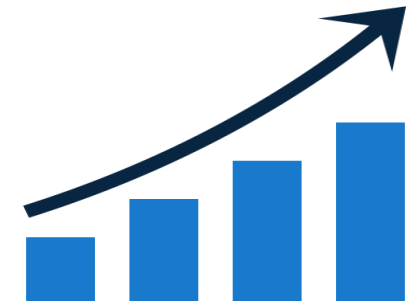
## MISSION

To design and deliver secure, scalable, and user-centric software solutions that simplify operations, enhance transparency, and enable data-driven decisions.

---

## VISION

To become the most trusted Technology Partner of enterprise and governance software solutions in emerging and global markets.



# ABOUT US

We Provide Best service to our clients



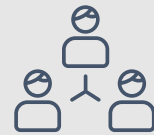
## INNOVATION PARTNER

We convert your 'Product Vision' into product development



## SOLUTION PARTNER

Identify your problem, Gap and provide the appropriate solution as a Technology Partner.



## SIMPLIFYING & ROLLOUT

End-to-End product lifecycle, design, development, deployment & maintenance.



## TECHNOLOGY PLAYER

Strong expertise in Different Updated technologies with cross-Platform compellability.



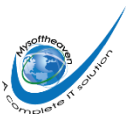
## DEDICATED TEAM

Skilled & motivated Multiple team ensuring quality solutions.



## POST SUPPORT SERVICE

Our partnership doesn't end at deployment. Ensure Dedicated Support for Your Continued Operations.



**Mysoft Heaven (BD) Ltd**

A complete IT solution

[www.mysoftheaven.com](http://www.mysoftheaven.com)

# OUR STRENGTH

## OUR CORE STRENGTH



### A DEDICATED TEAM WITH RELEVANT SKILLSET

We have 120+ Dedicated team member with multiple skill set as per present context so that we are very much flexible to work with multiple domain ( eGovernance , Enterprise Solution, Banking solution and any others software product development.



### PUBLIC SERVICE DELIVERY

We have served 500+ Digital service and serving 600M+ monthly end user . We have provided digital service to 1100M+ citizen from start till now.



### ENTERPRISE SOLUTION DEVELOPMENT

We have massive experience to develop Enterprise solution development in Government ,Private sector and offshore sector We have provided service to 80K+ office in different digital service where 4Lac+ office user using the system in 64 District, 514 Upazila and 3650+ union and 75,000+ Mouza in Bangladesh.



### DOCUMENT DIGITIZATION

We have successfully done 100M+ Digital record from hard copy . The most prestigious and challenging client like Cabinet Division, Bangladesh Parliament, Land Ministry, Land Reforms Board etc.



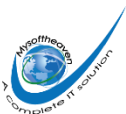
### REVENUE COLLECTION

We have collected 90,000M+ Taka by our developed software to Bangladesh Bank. Every day 10M-12M taka collecting through our software and automatically received by Bangladesh Bank. Here Most of the MFS, BANK, Card and Internet banking integrated to the system.



### 3<sup>rd</sup> PARTY INTEGRATION

More than 100+ 3<sup>rd</sup> party integration successfully completed to different national level system like NID, Passport, BRN, BTRC, BTCL, NTMC, BANK, IBASS++ etc.



**Mysoft Heaven (BD) Ltd**

A complete IT solution

[www.mysoftheaven.com](http://www.mysoftheaven.com)

# WHAT WE DO?

## STRATEGY

The strategies provide a clear plan for better teamwork, increasing productivity and efficiency

## PLANNING

Project planning is a discipline addressing how to complete a project in a certain timeframe, usually with defined stages and designated resources

## DEVELOPMENT

The agile strategy and comprehensive planning leads to impeccable development process and deployment

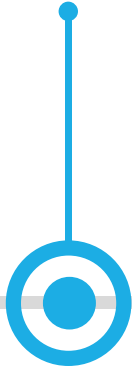


# WHY WE?



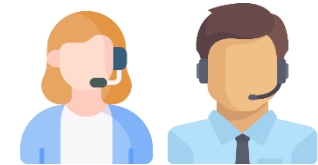
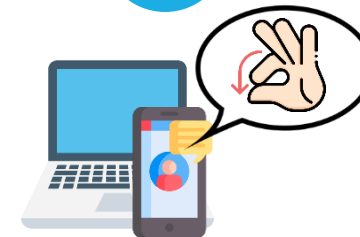
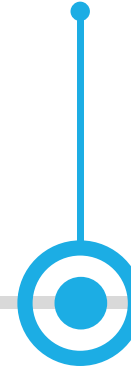
**User Friendly  
Solutions**

**Customized  
Software**



**Multiple-Pricing  
Model**

**Flawless  
Application**



**Committed Customer  
Support**



# CORE VALUES



**Customer  
First**

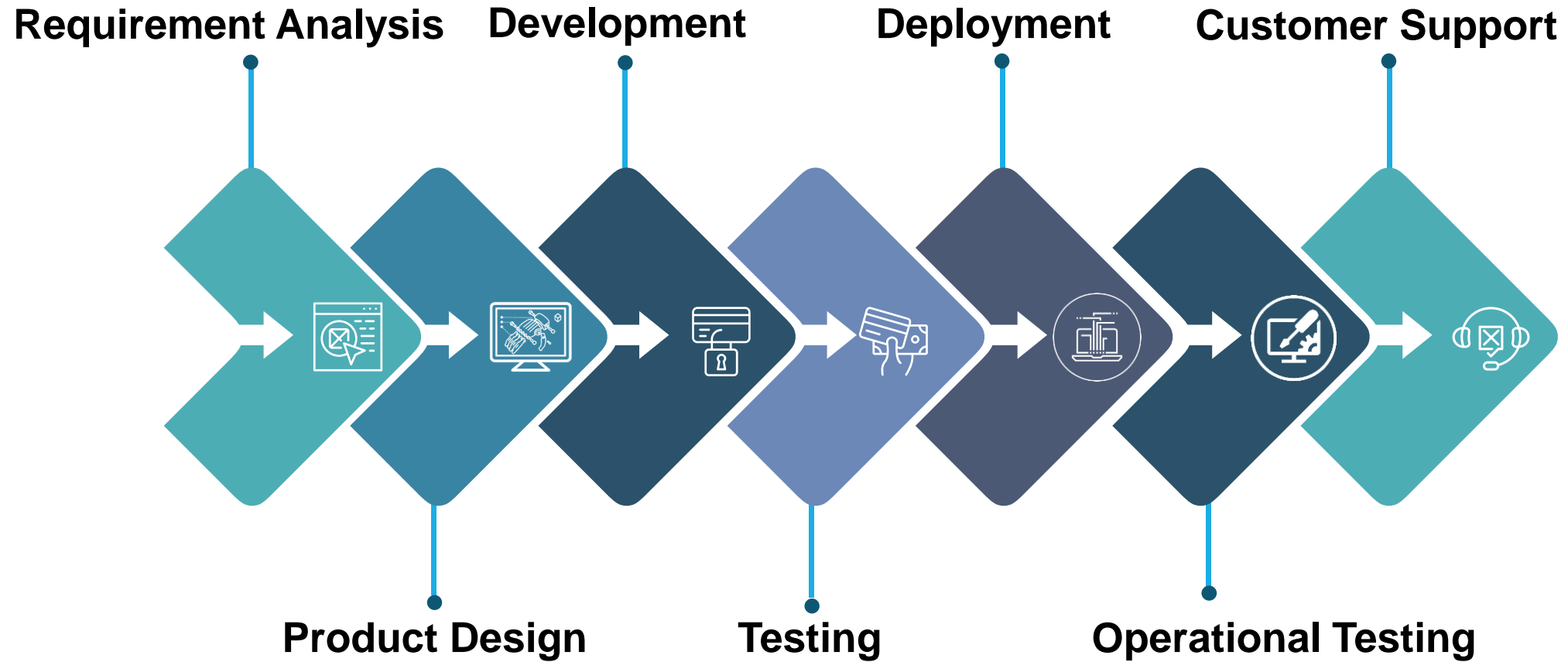
**Honesty and  
Fairness**

**Innovation**

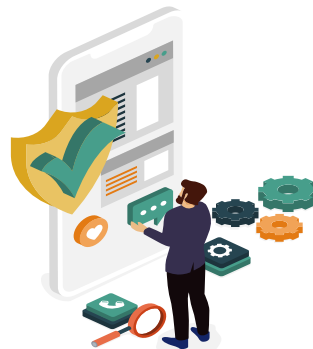
**Team  
Work**

**Pursuit of  
Excellence**

# OUR WORKING PROCESS



# OUR PRODUCTS



**Mysoft Heaven (BD) Ltd**

A complete IT solution

[www.mysoftheaven.com](http://www.mysoftheaven.com)

# Others Relevant Software for BANK/NBFI

01

Card Management System (CMS)

02

Document Management System (DMS)

03

Fraud Analyzer (FA).

04

Customer Complain Management System (CCMS).

05

Real Time Transaction Monitoring System.

06

Remittance Management System (RMS)

07

Legal & Recovery Management System (LRMS)

08

Loan Management System (LMS)

09

Asset Management System (AMS)

10

Environment Monitoring System (EMS)



# SOME OF OUR NATIONAL PROJECT



## Land Development Tax Service

**Data Volume:** 2800+ Crore transactions; 1.5 Lakh+ daily.

**Citizen Coverage:** 11+ Crore citizens & organizations

**Area Coverage:** 61 Districts

**Concurrent Users:** 50K+ (System User+ Citizen & Organization).

**Integrations:** NID, Birth Reg, BRTC, DPDC, A-Challan, Ekpay, IBAS++, MFS, LSG etc.

**Total Holding:** 5 crore.

**Strength:** Massive financial transaction handling with strong citizen service reach

Revenue Collection : Per Day 10-12 crore Taka collecting



## Case Management System

**Data Volume:** 150M–200M

**Daily Transaction:** 40K–50K

**Citizen Coverage:** 4.5–5 Crore

**Area Coverage:** 64 Districts, 4500+ offices

**Concurrent Users:** 25K–30K

**Integrations:** BTRC, Land Service Gateway (LSG)

**Strength:** Streamlined case updates for citizens, reducing land office visits.



## Unique Business ID System (UBID)

**Data Volume:** 58M+ daily traffic

**Citizen Coverage:** 5+ Lakh businesses

**Area Coverage:** Nationwide & Offshore

**Concurrent Users:** 10,000+

**Integrations:** NID, Trade License, BIN, TIN, Boithok, MFS

**Modules:** 8 core modules

**Strength:** One-stop digital identity system for businesses with cross-platform integration



## Land Service Gateway (LSG)

**Data Volume:** 2000+ Crore transactions

**Citizen Coverage:** 10+ Crore

**Area Coverage:** 61 Districts

**Users:** 30K+ system users; 50K–80K+ citizens

**Integrations:** NID, Birth Registration, BTRC, DPDC, Housing Authority

**Strength:** Centralized service bus ensuring interoperability among land systems

# SOME OF OUR NATIONAL PROJECT



## Smart Case Management System (SCMS)

**Users:** 15,000+ government staff & officials

**Concurrent Users:** 500+

**Area Coverage:** Cabinet Division, All Ministry & Under Organization.

**Integrations:** Doptor, High Court, Soltrac, SMS

**Strength:** Digital content/document management with monitoring & reporting features



## E-Court System.

**Data Volume:** 50K–60K daily transactions

**Citizen Coverage:** 15,000+ officials, serving millions indirectly

**Area Coverage:** 514 Upazilas, 64 Districts

**Concurrent Users:** 20K

**Integrations:** NID, MyGov, Doptor, A-Challan, MFS, High Court Systems

**Modules:** 8 modules

**Strength:** Speeds up judicial processes, enabling remote legal services



## Online Budget Management System

All land office (4500+ Union Land office , 492 AC (Land) office , 128 District SA & LA office , 8 DLRC office and Land reforms board budget manage through the system.



## Bangladesh Scout Service System

**Modules/Components:** 15

**Citizen Coverage:** 15–25 Lakh scouts

**Area Coverage:** 100+ offices nationwide

**Concurrent Users:** 10K–20K

**Integrations:** 12 service integrations (Events, Training, Blood Donation, Disaster Mgmt.)

**Strength:** End-to-end digital ecosystem for youth and social services

# SOME OF OUR NATIONAL PROJECT



## BBS Survey, Data Service & Certificate Management System

**Users:** 15,000+ government staff & officials  
**Concurrent Users:** 1500+  
**Area Coverage:** 64 District , 514 Upazila  
**Integrations:** Ekpays, NID, SMS, Email, Internal Others system etc.



## Bangladesh Parliament Library Automation

**Data Digitization:** 8Lac+  
**User:** HPM, Speaker, CH, MP, All parliament user etc.  
**Strength:** Speeds up the operation of Library Management .



## ERP System for NILG

**Data Volume:** 10K–12K daily transactions  
**Total end User :** 2Lac+  
**Area Coverage:** 514 Upazilas, 64 Districts  
**Concurrent Users:** 20K  
**Integrations:** NID, SMS , email etc.  
**Modules:** 8 modules  
**Strength:** Speeds up All the activities in one place.  
**Area Coverage:** NILG Headquarter, 514 Upazilas, 64 Districts etc.



## Uttoradhikar Calculator

**Property calculation by click**  
**Citizen Coverage:** 300M+  
**Area Coverage:** Whole Bangladesh and offshore.  
**Service Recipient:** Citizen, Organization, Lawyer , Bank etc.



# SOME OF OUR VALUABLE GOVERNMENT CLIENTS



Bangladesh Parliament



**Cabinet  
Division**

Government of the People's  
Republic of Bangladesh



Land Reform Board



ICT Division



Aspire to Innovate (a2i)



Bangladesh Trade & Tariff Commission



Ministry of Land



Bangladesh Agricultural  
Corporation Development (BADC)



Bangladesh Bureau of Statistics



Bangladesh Army



Ministry of Health and Family Welfare



LGRD Ministry



# SOME OF OUR VALUABLE GOVERNMENT CLIENTS



National Institute of Local Government (NILG)



Ministry Of Education (MoE)



Bangladesh Film Development Authority



পরিবেশ অধিদপ্তর

Department of Environment



Investment Corporation of Bangladesh (ICB)



Ministry of Science & Technology



DDLG , Naogaon



Department of Jute.



Ministry of Commerce.



University of Dhaka



Courts of Word , Ministry of Land.



DDLG , Gogra.

# SOME OF OUR VALUABLE GOVERNMENT & DONER AGENCIES



Bureau of Non-Formal Education



Ministry of Children & Women Affairs



Bangladesh Scout



Bangladesh Fisheries Research Institute (BFRI)



JICA, Bangladesh



World Bank.



**Mysoft Heaven (BD) Ltd**

A complete IT solution



Zilla Parishad, Natore



UNDP



Bangladesh Computer Council (BCC)



Bangladesh Hi-Tech  
Park Authority (BHTPA)



Department of Women Affairs (DWA)



Department of ICT (DoICT)

# SOME OF OUR VALUABLE PRIVATE CLIENTS



CARITAS Bangladesh



Centre for the Rehabilitation of the Paralyzed



Buckle UP



Impress Group



Textile Engineering



Anirban World



**Mysoft Heaven (BD) Ltd**

A complete IT solution



**AJ Group** AJ Group



Sonali Saving & Cooperation Ltd.



Alliance Group



Time Sweater Ltd.



Orchid Garments Ltd.



**LUSAKA GROUP** Lusaka Group

# SOME OF OUR OFFSHORE CLIENTS



# SOME OF OUR NATIONAL MOBILE APPS



**Vumi Sheba**



**Land Development Tax**



**Uttoradhikar**



**Case Management System**



**NILG App**



**E-Court**



**Bangladesh Scouts**

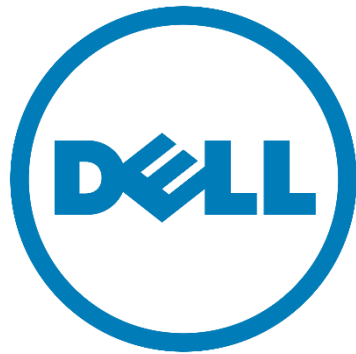


**Unique Business ID System**



**Dolil Calculator**

# OUR PARTNERS



# OUR SUPPORT SERVICE PROCESS

“Our Customers Are The First Priority”



**Hotline 019776602-09**



**Support in Facebook**



**Support Calls At Office**



**WhatsApp/Telegram**



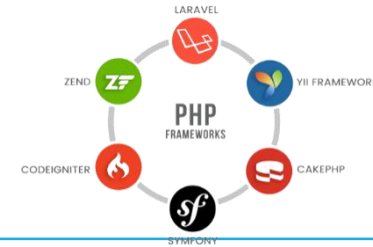
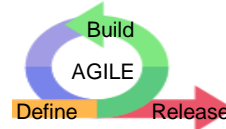
**Email**



# TECHNOLOGY WHAT WE USE



## DESIGN METHODOLOGIES & Framework



## DEVELOPMENT TOOLS & DOCUMENTATIONS



Visual Studio



Android Studio



Figma



## LANGUAGES & DATABASE



.NET



ORACLE



## DWEB SERVER



Apache Tomcat



IBM Domino Server



# OUR DYNAMIC TEAM



Business Team



Marketing Team



Development Team



Human Resource Team



SQA Team



Project Management Team



R&D Team



Customer Support Team

# OFFICE & INFRASTRUCTURE

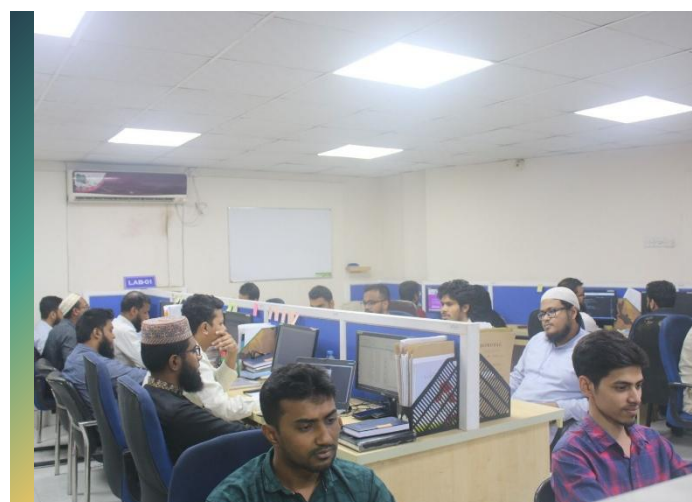
## Our Work Environment





# OFFICE & INFRASTRUCTURE

## Our Work Environment



# OFFICE & INFRASTRUCTURE



Dhaka, Bangladesh



Miami, Florida, USA

# MEMBERSHIP & CERTIFICATION



# AWARD & RECOGNITION



Land Development Tax System



Land Development Tax System



Vumi Seba Mobile App



World Summit Information Society  
(WSIS) Prize



Digital Bangladesh Award 2022



Digital Bangladesh Award 2022

# CONTACT US

Please Contact with us to the following address

## ADDRESS

Raisa & Shikder Tower, Level 3 & Level-5 3/8, North Pirebag,  
60 Fit Road, Dhaka-12016.

## HOURS

Sun-Thursday 9.30AM to 6.30PM  
Weekends closed

## E-MAIL

[info@mysoftheaven.com](mailto:info@mysoftheaven.com) ,  
[mysoftheaven@gmail.com](mailto:mysoftheaven@gmail.com)

## WEBSITE

[www.mysoftheaven.com](http://www.mysoftheaven.com)

## OUR VISION

Phone: 0241001094 , Cell : 019776602-09

## FACEBOOK

@mysoftheavenLtd

## TWITTER

@mysoftheaven

## Youtube

@mysoftheaven



**Mysoft Heaven (BD) Ltd**

A complete IT solution

[www.mysoftheaven.com](http://www.mysoftheaven.com)



*Thank you!*